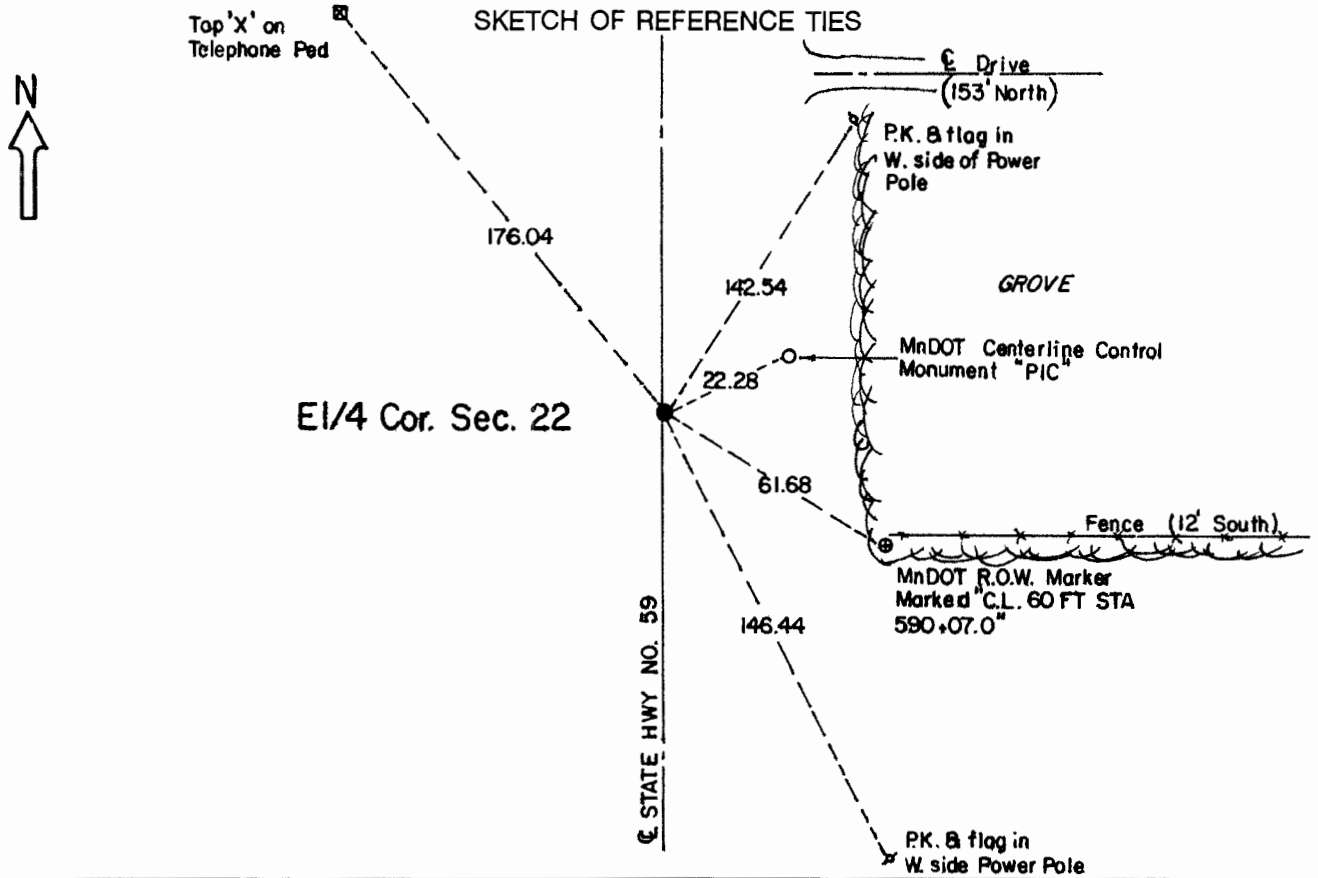


CERTIFICATE OF LOCATION OF GOVERNMENT CORNER

East Quarter Corner of Section **22** , Township **108** , Range **41** 5th P.M.
STATE OF MINNESOTA, County of Murray.

Statement:

Oct. 27, 1989 - Found the brass plug placed by the Minnesota Department of Highways in 1932. Left the monument as found.



Statement of evidence relative to this corner location is on the back of page.

I hereby certify that this document and the data contained herein was prepared by me or under my direct supervision and that I am a duly Registered Land Surveyor under the laws of the State of Minnesota.

Duane A. Bonnema Nov 6, 1989
Duane A. Bonnema Date

Minnesota Registration No. 14895

OFFICE OF THE COUNTY RECORDER
COUNTY OF MURRAY **NOV 15 1989**

I hereby certify that this document was filed in the County Recorder's office at ___ M. on the ___ day of ___ A.D., 19__

County Recorder *James V. Johnson*

By _____, Deputy
DOCUMENT NO. _____

East Quarter Cor. Sec. 22 T108N-R41W

Statement:

- September 1861 Original Government Land Office Surveyor L. G. M. Fletcher records in their field notes, "built mound with trench pits, charred stake per instructions."*
- 1932 The Minnesota Highway Department records in their field notes, "1/4 Corner ... Brass Plug in place ... 1/4 Corner on centerline."*
- Aug. 30, 1989 Duane A. Bonnema, L.S. Reg. No. 14895, removed 3 inches of asphalt pavement and found the "brass plug" placed by the Minnesota Department of Highways in 1932 when they note "1/4 Corner on centerline."*